

**BEAUTIFY AND PROTECT YOUR CONCRETE SURFACES**

**WITH**

In Business since 1994

# **ADVANCED SURFACES, INC.**

AUTHORIZED DEALER AND INSTALLER OF:



**CONCRETE RE-SURFACING PRODUCTS**

**OFFERS EXCELLENT TRACTION  
EVEN WHEN WET!**



**UNLIMITED CHOICES OF COLORS, DESIGNS & TEXTURES**

**Before CTi spray system**



**After CTi spray system**



**WE REPAIR ALL PROBLEMS DURING OUR PREPARATION PHASE**



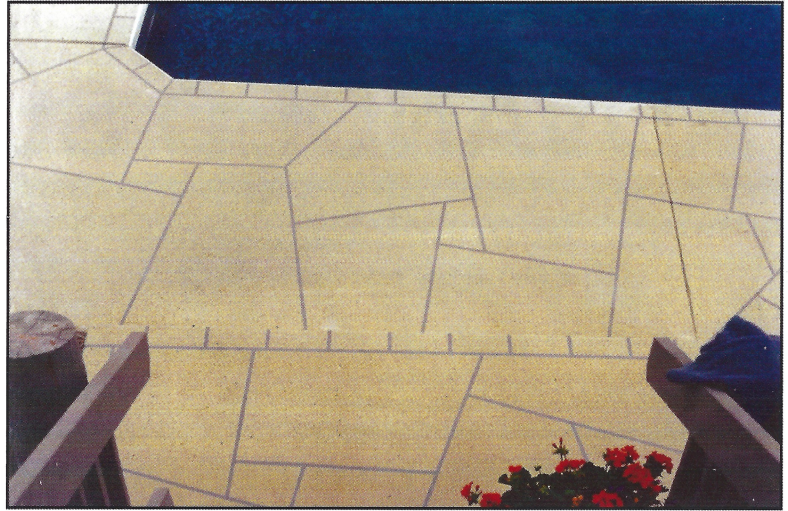
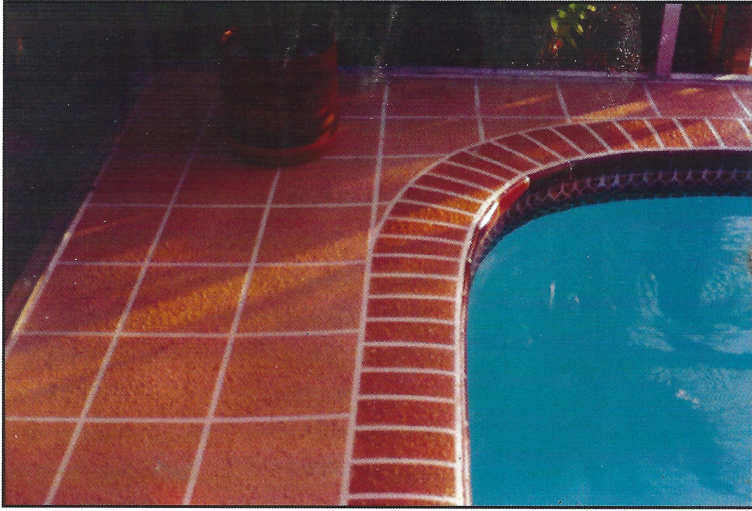
**FREE ESTIMATES**

**860-442-2221**

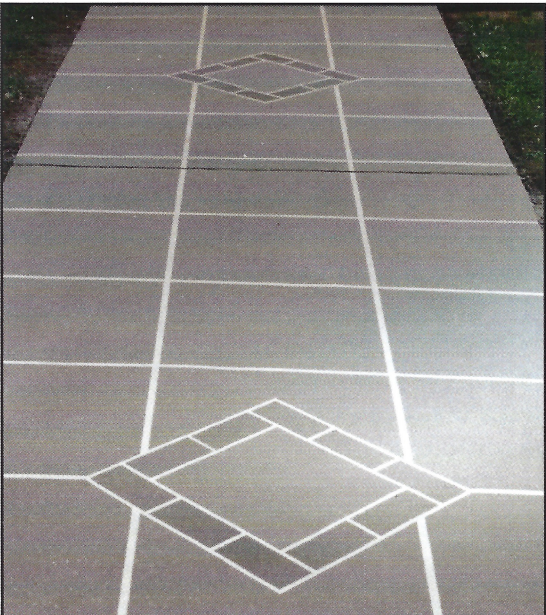
For more information and pictures  
**[www.dgarfield.com](http://www.dgarfield.com)**



**THE CTI SYSTEM IS FREEZE & HEAT, FADE & STAIN, SALT & MILDEW RESISTANT  
TWICE THE STRENGTH & EASIER TO MAINTAIN THAN CONCRETE**



**INSTALL OUR ACRYLICLY MODIFIED CEMENT DIRECTLY OVER YOUR EXISTING  
CONCRETE (NEW OR OLD). WATCH AS YOUR STOOPS, SIDEWALKS, PATIOS,  
POOL DECKS AND FOUNDATIONS GO FROM SIMPLE TO . . . SPECTACULAR!**



**ADVANCED SURFACES, INC.**

*"Bringing Design & Beauty to Concrete"*

**DAVID GARFIELD**

860-442-2221 | 800-737-4-CTI

389 BOSTON POST RD • WATERFORD, CT 06385